

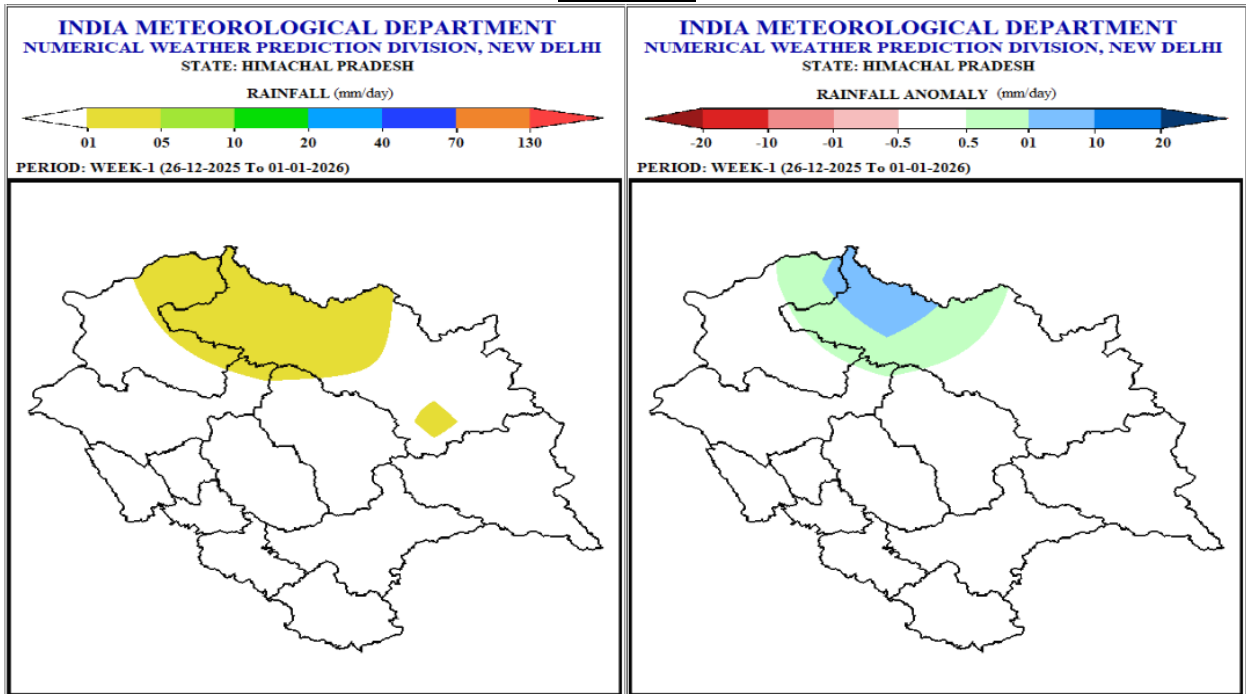
Extended Range Weather Forecast

Date: - 25.12.2025

Weather Forecast and Warning for two weeks w.e.f. 26th December, 2025

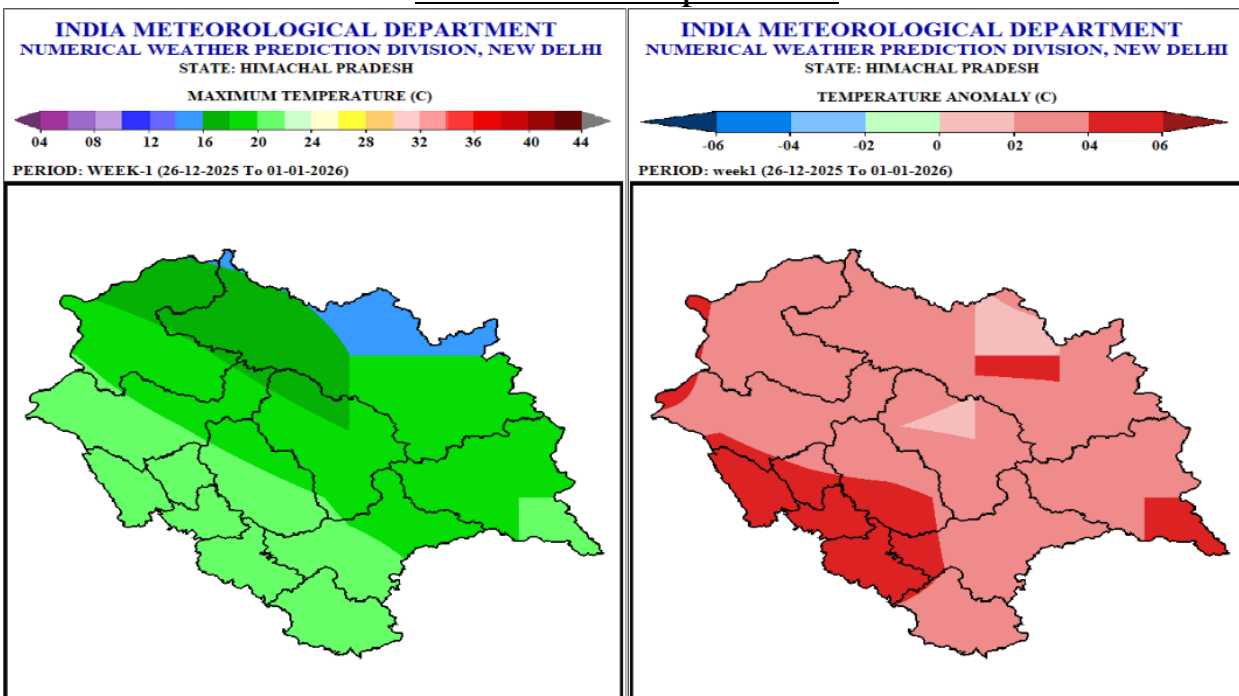
Week 1 (26th December 2025 – 01st January 2026)

Rainfall



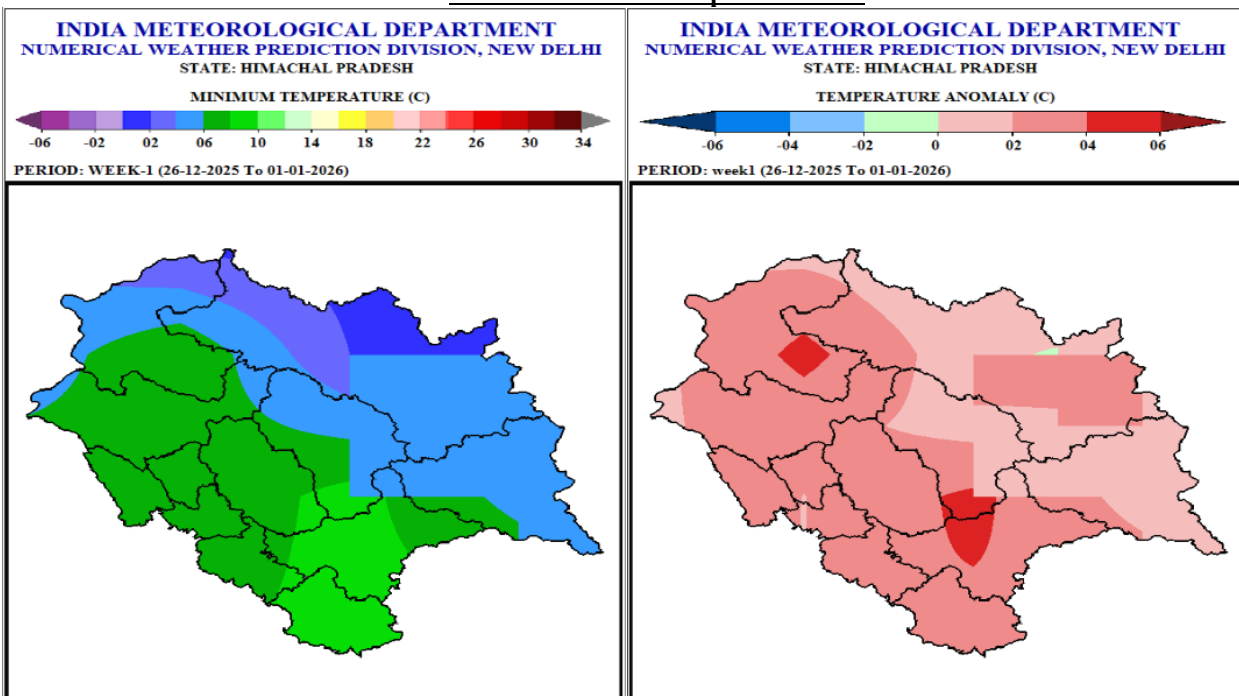
- Very light to light rain/snow likely at isolated places on 26th, 30th and 31st December 2025 over high hills of the state. Dry weather likely to prevail during remaining days of the week 1.
- Rainfall anomaly likely to be normal over most parts of the state and above normal for some parts of Chamba & Lahaul-Spiti districts in the week 1.

Maximum Temperatures



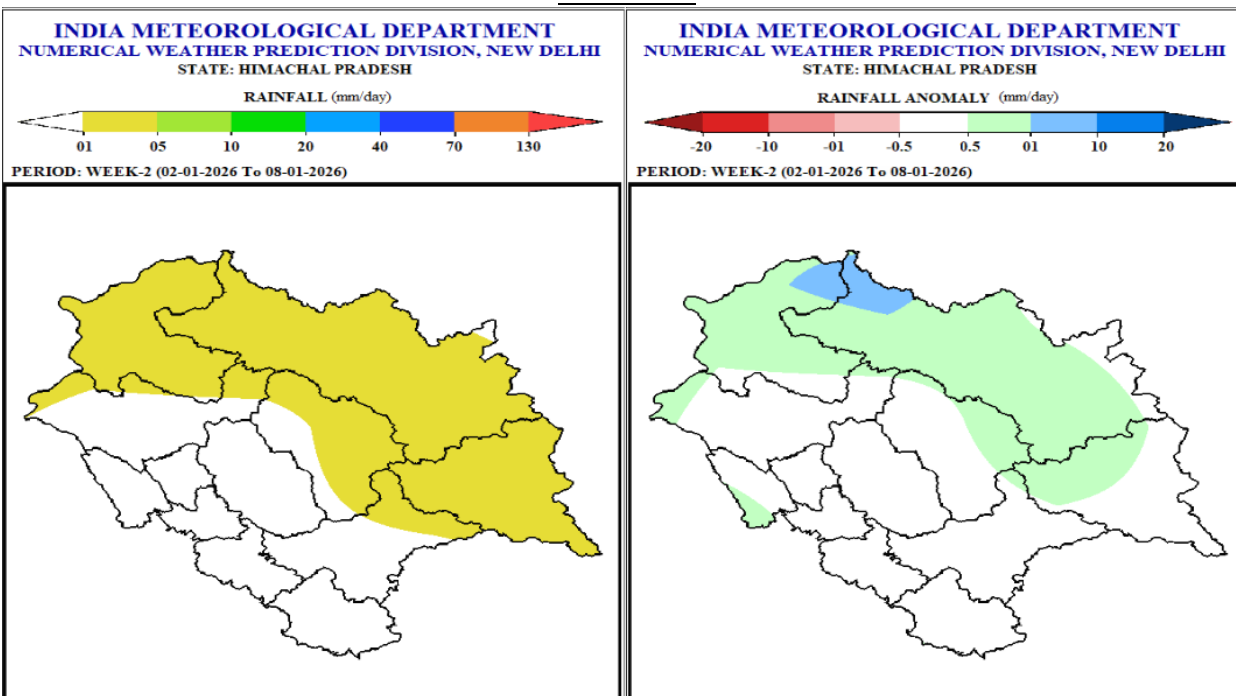
- Maximum Temperatures are very likely to be in the range of 8-16°C over most parts of the high hills; in the range of 16-22°C over most parts of the mid hills and in the range of 20-26°C over most parts of the low hills/plains during many days of the week 1.
- Maximum Temperatures are very likely to be above normal over most parts of the mid & the high hills of the state and above normal to appreciably above normal over many parts of the low hills/plains & adjoining mid hills and some parts of Kinnaur & Lahaul-Spiti districts in the week 1.

Minimum Temperatures



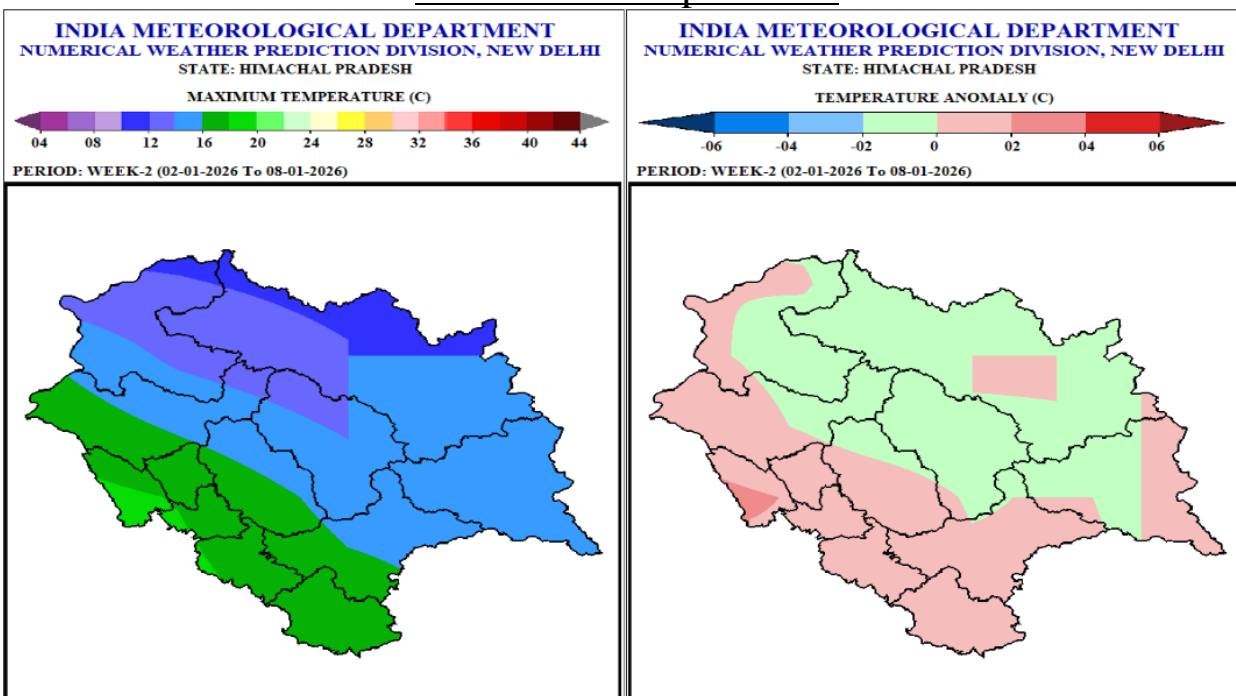
- Minimum Temperatures are very likely to be in the range of 02-10 °C over most parts of the low hills/plains; in the range of 00-08 °C over most parts of the mid hills and in the range of -08 to 02 °C over most parts of the high hills during many days of the week 1.
- Minimum Temperatures are very likely to be normal to above normal over most parts of the state and appreciably above normal some parts of Kullu, Chamba & Shimla districts in the week 1.

Rainfall



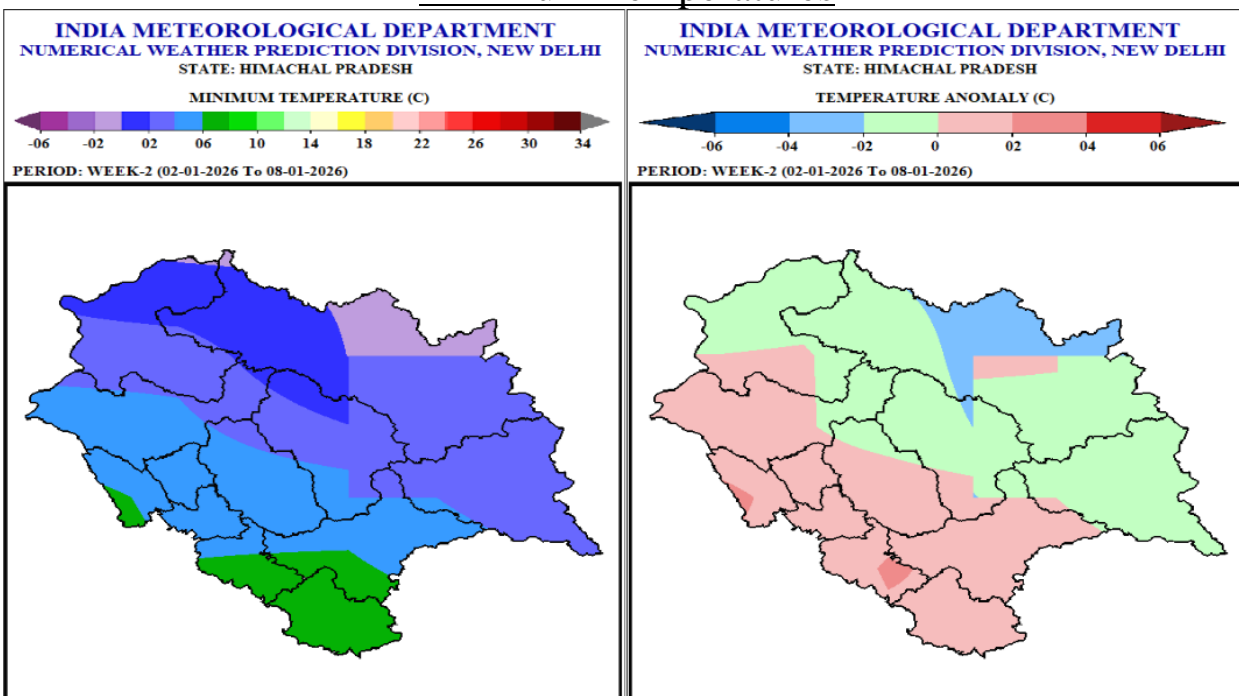
- Light precipitation likely at isolated places over high hills & adjoining mid hills of the state during some days of the week 2.
- Rainfall anomaly likely to be normal over many parts of the low hills/plains & the mid hills of the state and normal to above normal for many parts of the high hills and some parts of Una district in the week 2.

Maximum Temperatures



- Maximum Temperatures are likely to be in the range of 08-14°C over many parts of the high hills; in the range of 14-22°C over many parts of the mid hills and in the range of 20-26°C over many parts of the low hills/plains during many days of the week 2.
- Maximum Temperatures are likely to be normal over many parts of the state in the week 2.

Minimum Temperatures



- Minimum Temperatures are likely to be in the range of 04-10°C over many parts of the low hills/plains; in the range of 00-08°C over many parts of the mid hills and in the range of -10 to 02 °C over many parts of the high hills during many days of the week 2.
- Minimum Temperatures are likely to be normal over many parts of the state and below normal for some parts of Lahaul- Spiti district in the week 2.

Outlook for next 2 weeks

| Week | Max. Temp. | Min. Temp. | Rainfall Anomaly |
|--|------------|---|------------------------|
| Week 3 09th January to 15th January | Normal | Low hills/plains & mid hills: Normal; High hills & adjoining mid hills: Normal to Below Normal | Normal to Above Normal |
| Week 4 16th January to 22nd January | Normal | Low hills/plains & mid hills: Normal; High hills & adjoining mid hills: Normal to Below Normal | Normal |

| REGION | AREAS/DISTRICTS COVERED |
|------------------|--|
| HIGH HILLS | LAHAUL & SPITI, KINNAUR, CHAMBA, UPPER PARTS OF KULLU AND MANDI DISTRICTS |
| MIDDLE HILLS | SHIMLA, MANDI, KULLU, SOME PARTS OF CHAMBA(SIHUNTA, CHOWARI AND CHAMBA), MOST PARTS OF SOLAN AND SIRMAUR DISTRICTS |
| LOW HILLS/PLAINS | UNA, BILASPUR, HAMIRPUR, SOME PARTS OF KANGRA (NURPUR, JWALA & DEHRA), SOLAN(NALAGARH, BADDI, ARKI & KUNIHAR) AND SIRMAUR (NAHAN & PAONTA SAHIB) DISTRICTS |

Regards
Met Centre Shimla

For latest Weather Bulletin and warnings kindly visit following links

Website: <https://mausam.imd.gov.in/shimla/>

Facebook: <https://www.facebook.com/profile.php?id=100018411811087>

Twitter: <https://twitter.com/himachalmausam>

IG: www.instagram.com/metcentresml/